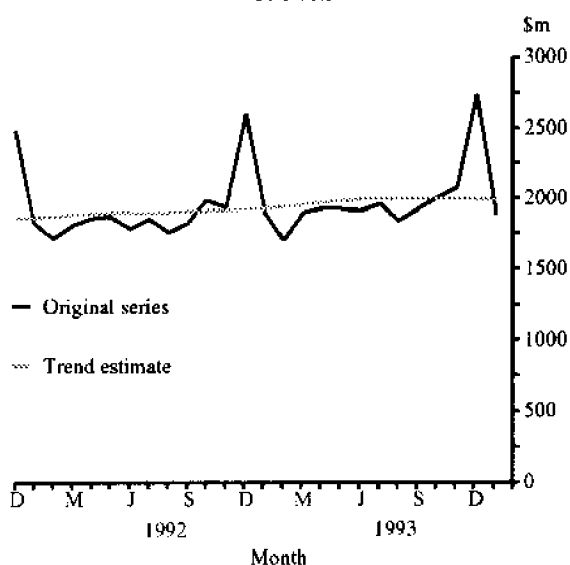


CATALOGUE NUMBER 1307.2
7 MARCH 1994

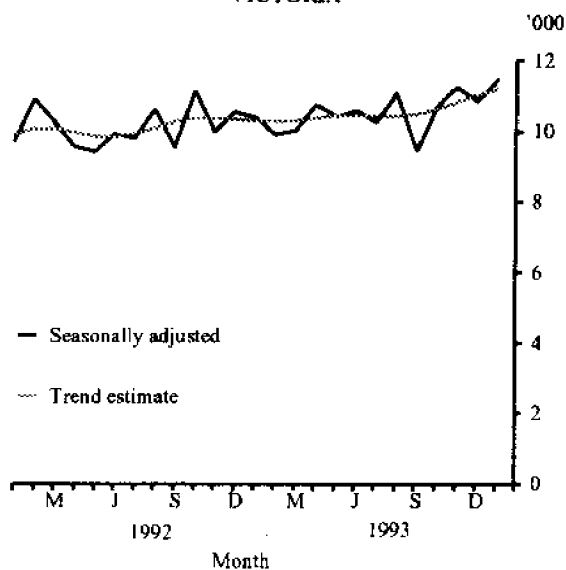
**ECONOMIC INDICATORS, VICTORIA,
FEBRUARY 1994**

MAIN FEATURES

**TURNOVER OF RETAIL ESTABLISHMENTS,
VICTORIA**



**NEW MOTOR VEHICLES REGISTERED,
VICTORIA**



Retail trade

The trend estimates (at current prices) of retail turnover for Victoria have been in decline for each of the last five months. The January estimate decreased by 0.1 per cent over December 1993 but showed an increase of 3.3 per cent over January 1993.

In original terms at current prices, retail turnover in Victoria decreased by 31.3 per cent in January 1994 over December 1993 and by 1.1 per cent over January 1993.

New motor vehicle registration

The trend estimate for the number of new motor vehicles registered in Victoria increased by 1.8 per cent in January 1994 (11,219) over December 1993 (11,021). This was the fifth consecutive monthly increase since August 1993. New motor vehicle registrations in January 1994 increased by 9.1 per cent over January 1993.

In seasonally adjusted terms new motor vehicle registrations in Victoria increased by 5.8 per cent in January 1994 over December 1993 and by 10.5 per cent over January 1993.

Readers are reminded that trend estimates are subject to revision as subsequent months data become available.

INQUIRIES

. for further information about statistics in this publication and the availability of related unpublished statistics, contact Tony Ward or Dinny Jaconis on Melbourne (03) 615 7000; or any ABS State office.

. for information about other ABS statistics and services please contact Information Services Melbourne (03) 615 7000; or any ABS State office.

TABLE 1. VICTORIA IN RELATION TO OTHER STATES AND AUSTRALIA (a)

| Indicator | Reference period | NSW | Vic. | Qld | SA | WA | Tas. | Aust. (b) | Victoria | |
|---|------------------|------------|---------|----------------|---------|--------|---------|-----------|--------------------|------|
| | | | | | | | | | as a percentage of | |
| | | | | | | | | | Australia | |
| Employed persons | '000 | Jan 94 | 2,560.3 | 1,926.8 | 1,394.5 | 640.7 | 801.0 | 191.5 | 7,738.9 | 24.9 |
| *Unemployment rate | | | | | | | | | | |
| - trend series | per cent | Jan 93 | 10.6 | 11.9 | 10.3 | 11.4 | 9.1 | 11.9 | 10.8 | .. |
| Average weekly total earnings | | | | | | | | | | |
| - all employees (c) | \$ | Nov qr 93 | 537.20 | 527.00 | 496.20 | 492.50 | 505.20 | 501.70 | 521.50 | .. |
| Consumer price index, all groups (c) | 1989-90=100 | Dec qr 93 | 108.8 | 110.8 | 110.2 | 112.8 | 108.5 | 111.6 | 110.0 | .. |
| *New dwelling units approved | no. | Jan 93 | 3,570 | 2,183 | 3,565 | 732 | 1,543 | 344 | 12,774 | 17.1 |
| Value of all buildings approved | \$m | Jan 93 | 659.5 | 304.9 | 367.8 | 89.2 | 159.6 | 40.9 | 1,804.5 | 16.9 |
| Engineering construction | | | | | | | | | | |
| - commenced, total | \$m | Sept 93 | 1,566.5 | 473.2 | 907.5 | 135.0 | 353.1 | 56.4 | 3,592.9 | 13.2 |
| - yet to be done, total | \$m | Sept 93 | 1,827.0 | 885.8 | 1,176.2 | 165.2 | 549.7 | 111.8 | 4,809.5 | 18.4 |
| Housing finance for owner occupation | \$m | Dec 93 | 1,398.3 | 990.3 | 782.7 | 305.5 | 516.0 | 82.5 | 4,218.7 | 23.5 |
| Retail turnover - trend estimates | \$m | Jan 93 | 2,965.7 | 1,989.1 | 1,508.8 | 647.5 | 861.3 | 215.8 | 8,438.5 | 23.6 |
| New motor vehicle registrations | | | | | | | | | | |
| - seasonally adjusted | no. | Jan 93 | 16,857 | 11,480 | 9,790 | 3,032 | 4,880 | 1083.0 | 48,784 | 23.5 |
| Takings, licensed hotels, motels and guest houses with facilities | \$'000 | Sept qr 93 | 229,454 | 100,636 | 195,505 | 33,133 | 57,364 | 12,878 | 672,163 | 15.0 |
| Exports (excluding re-exports) | \$m | Dec 93 | 1,403.4 | 1,062.7 | 965.4 | 351.7 | 1,130.5 | 128.7 | 5,208.8 | 20.4 |
| Imports | \$m | Dec 93 | 2,471.8 | 1,634.6 | 563.2 | 214.7 | 558.2 | 17.5 | 5,486.2 | 29.8 |
| *Industrial disputes (12 months ended July 93) | | | | | | | | | | |
| - working days lost per '000 employees | no. | Nov 93 | 90 | 179 | 131 | 56 | 53 | 55 | 112 | .. |
| Electricity production | million kWh | Jan 94 | 4,710 | 2,732 | 2,753 | 754.0 | 1,364 | 697 | 13,163 | 20.8 |
| *Actual private new capital expenditure | | | | | | | | | | |
| - seasonally adjusted | \$m | Sept qr 93 | 1,952 | 1,594 | 916 | 475 | 1,242 | 114 | 6,495 | 24.5 |

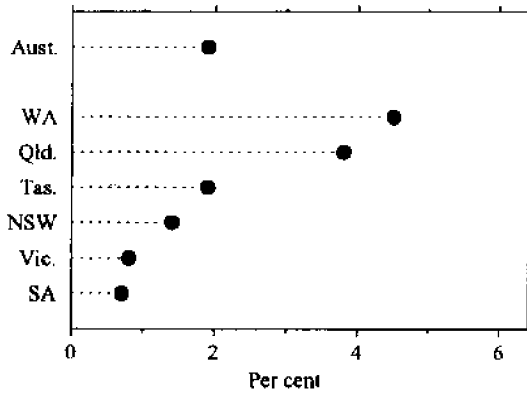
CHANGE OVER SAME PERIOD PREVIOUS YEAR (PER CENT)

| | | | | | | | | | | |
|---|-------------|------------|-------|--------------|------|-------|-------|-------|-------|----|
| *Employed persons | '000 | Jan 94 | 1.4 | 0.8 | 3.8 | 0.7 | 4.5 | 1.9 | 1.9 | .. |
| Unemployment rate | | | | | | | | | | |
| - trend series | per cent | Jan 93 | .. | .. | .. | .. | .. | .. | .. | .. |
| Average weekly total earnings | | | | | | | | | | |
| - all employees (c) | \$ | Nov qr 93 | 1.4 | 4.4 | 4.8 | 4.8 | 3.0 | 5.7 | 3.4 | .. |
| Consumer price index, all groups (c) | 1989-90=100 | Dec qr 93 | 1.3 | 2.4 | 1.9 | 1.9 | 2.3 | 3.3 | 1.9 | .. |
| New dwelling units approved | no. | Jan 93 | -2.8 | 4.4 | 13.9 | -9.7 | -3.3 | 10.6 | 6.8 | .. |
| Value of all buildings approved | \$m | Jan 93 | -33.1 | 3.3 | -5.2 | 15.1 | -14.3 | 16.2 | -1.9 | .. |
| Engineering construction | | | | | | | | | | |
| - commenced, total | \$m | Sept 93 | -1.2 | -12.2 | 31.6 | -15.9 | 15.5 | 14.6 | 5.5 | .. |
| - yet to be done, total | \$m | Sept 93 | -7.1 | 2.6 | 3.9 | -1.0 | 30.2 | -37.2 | -0.4 | .. |
| Housing finance for owner occupation | \$m | Dec 93 | 49.9 | 36.0 | 29.4 | 37.7 | 64.4 | 62.1 | 42.5 | .. |
| *Retail turnover - trend estimates | \$m | Jan 93 | 4.5 | 3.3 | 5.2 | 7.1 | 10.5 | 3.8 | 5.0 | .. |
| New motor vehicle registrations | | | | | | | | | | |
| - seasonally adjusted | no. | Jan 93 | 13.0 | 10.5 | 6.8 | -3.5 | 3.5 | 2.8 | 9.0 | .. |
| Takings, licensed hotels, motels and guest houses with facilities | \$'000 | Sept qr 93 | 6.7 | -1.3 | 12.1 | 8.9 | 14.9 | 6.9 | 8.3 | .. |
| Exports (excluding re-exports) | \$m | Dec 93 | 15.3 | 14.6 | -9.8 | 2.7 | -21.7 | 8.1 | -1.4 | .. |
| Imports | \$m | Dec 93 | 12.6 | 11.5 | 4.2 | -20.3 | 55.1 | -6.4 | 12.5 | .. |
| Industrial disputes (12 months ended July 93) | | | | | | | | | | |
| - working days lost per '000 employees | no. | Nov 93 | 4.7 | -48.9 | 95.5 | 154.5 | -47.5 | -78.5 | -26.3 | .. |
| Electricity production | million kWh | Jan 94 | -6.0 | -9.2 | 7.7 | 22.8 | 3.6 | 6.3 | 0.9 | .. |
| Actual private new capital expenditure | | | | | | | | | | |
| - seasonally adjusted | \$m | Sept qr 93 | -8.1 | 25.5 | -4.0 | 27.3 | 16.9 | 7.5 | 6.9 | .. |

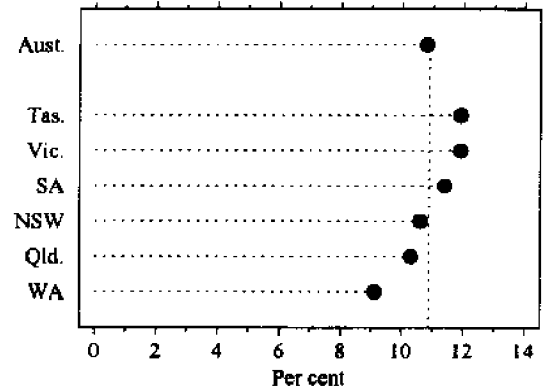
(a) All figures are original unless otherwise stated. (b) The Australian total includes figures for NT and the ACT (c) Available only for the middle month of the quarter. * An asterisk before a statistical series denotes that a corresponding graph is included in the relevant section.

VICTORIA IN RELATION TO OTHER STATES AND AUSTRALIA

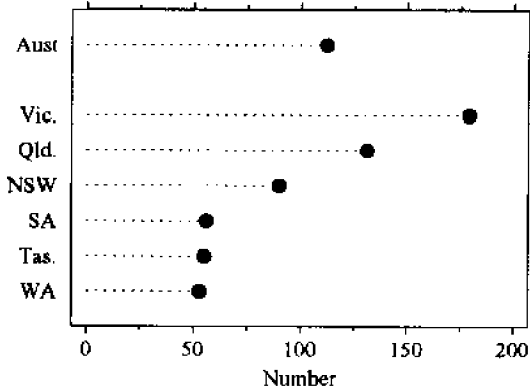
EMPLOYED PERSONS
Change over same period previous year
January 1994



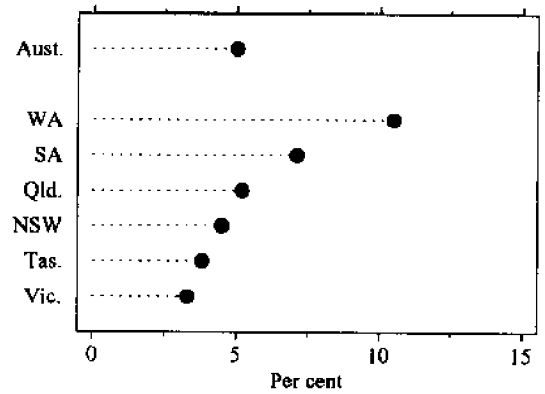
UNEMPLOYMENT RATE
Trend series
January 1994



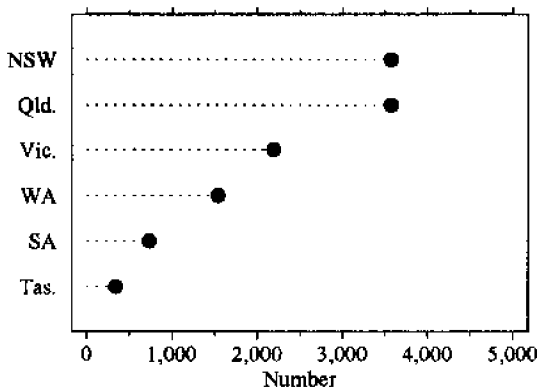
INDUSTRIAL DISPUTES
Working days lost per '000 employees
For the twelve months ended November 1993



RETAIL TURNOVER
Trend estimates
Change over same period previous year
January 1994



NEW DWELLING UNITS APPROVED
January 1994



PRIVATE NEW CAPITAL EXPENDITURE
Seasonally adjusted
September quarter 1993

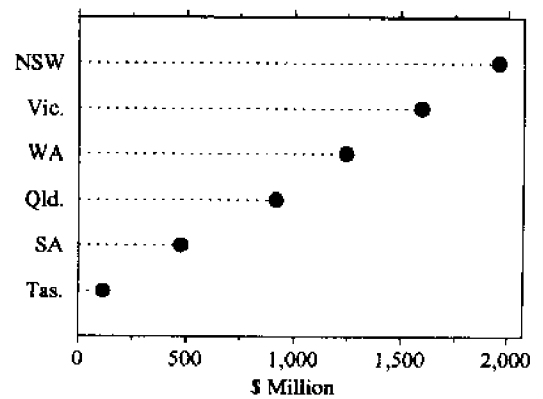


TABLE 2. ECONOMIC INDICATORS, VICTORIA AND AUSTRALIA

| Indicator | | Reference period | Victoria | | | | Australia | | Victoria as a % of Australia | Source index (a) |
|--|-------------|------------------|---------------|------------------|------------------|------------------|---------------|------------------|------------------------------|------------------|
| | | | Figures | | % Change | | Figures | % Change | | |
| | | | Latest period | Preceding period | preceding period | Over same period | Latest period | preceding period | | |
| | | | | | | | | | | |
| Population - | | | | | | | | | | |
| Estimated resident population | '000 | June 93 | 4,462.1 | 4,461.4 | 0.0 | 0.3 | 17,661.5 | 0.2 | 25.3 | 1 |
| Civilian population aged 15 years and over | '000 | Jan 93 | 3,547.2 | 3,545.8 | 0.0 | 0.6 | 13,960.4 | 0.1 | 25.4 | 2 |
| Labour force - | | | | | | | | | | |
| Labour force | | | | | | | | | | |
| - original series | '000 | Jan 93 | 2,200.8 | 2,258.8 | -2.6 | 0.8 | 8,726.8 | -1.8 | 25.2 | 2 |
| - seasonally adjusted | '000 | Jan 93 | 2,212.4 | 2,221.4 | -0.4 | 0.8 | 8,803.8 | 0.2 | 25.1 | 2 |
| - trend estimate | '000 | Jan 93 | 2,226.6 | 2,231.5 | -0.2 | 1.2 | 8,816.8 | 0.2 | 25.3 | 2 |
| Participation rate - seasonally adjusted | per cent | Jan 93 | 62.4 | 62.6 | .. | .. | 63.1 | .. | .. | 2 |
| *Unemployment rate | | | | | | | | | | |
| - original series | per cent | Jan 93 | 12.5 | 12.0 | .. | .. | 11.3 | .. | .. | 2 |
| - seasonally adjusted | per cent | Jan 93 | 11.8 | 11.8 | .. | .. | 10.6 | .. | .. | 2 |
| - trend estimate | per cent | Jan 93 | 11.9 | 12.0 | .. | .. | 10.8 | .. | .. | 2 |
| Employed persons by industry (e) | | | | | | | | | | |
| Agriculture, forestry, fishing, etc (b) | '000 | Nov qr 93 | 103.6 | 92.6 | 11.9 | 8.1 | 518.2 | 2.9 | 20.0 | 13, 14 |
| Manufacturing | '000 | Nov qr 93 | 346.6 | 340.1 | 1.9 | -4.3 | 1,122.1 | 3.4 | 30.9 | 13, 14 |
| Construction | '000 | Nov qr 93 | 118.8 | 112.1 | 6.0 | -0.3 | 558.7 | -0.1 | 21.3 | 13, 14 |
| Wholesale and retail | '000 | Nov qr 93 | 431.6 | 430.8 | 0.2 | 3.4 | 1,644.5 | 2.7 | 26.2 | 13, 14 |
| Transport and storage | '000 | Nov qr 93 | 86.3 | 78.9 | 9.4 | 2.0 | 373.1 | 1.4 | 23.1 | 13, 14 |
| Finance, property and business services | '000 | Nov qr 93 | 227.6 | 226.5 | 0.5 | 0.4 | 882.0 | 2.8 | 25.8 | 13, 14 |
| Community services (c) | '000 | Nov qr 93 | 357.7 | 352.2 | 1.6 | -0.9 | 1,501.6 | 0.9 | 23.8 | 13, 14 |
| Recreational, personal and other services | '000 | Nov qr 93 | 145.1 | 138.1 | 5.1 | 9.1 | 640.0 | 4.0 | 22.7 | 13, 14 |
| Other industries (d) | '000 | Nov qr 93 | 150.3 | 163.0 | -7.8 | -2.3 | 592.9 | -15.2 | 25.3 | 13, 14 |
| Total all industries | '000 | Nov qr 93 | 1,967.6 | 1,930.9 | 1.9 | 0.7 | 7,833.1 | 1.9 | 25.1 | 13, 14 |
| Job vacancies (e) - original series | '000 | Nov qr 93 | 9.9 | 9.1 | 8.8 | 70.7 | 38.2 | -2.1 | 25.9 | 3 |
| Overtime (e) | | | | | | | | | | |
| Average weekly hours per employee | hours | Nov qr 93 | 1.46 | 1.20 | 21.7 | 21.7 | 1.30 | 13.0 | .. | 3 |
| Employees working overtime | per cent | Nov qr 93 | 17.45 | 16.31 | 7.0 | 9.8 | 17.16 | 4.3 | .. | 3 |
| Average weekly employee earnings (e) | | | | | | | | | | |
| Full-time adult - total | \$ | Nov qr 93 | 638.20 | 633.40 | 0.8 | 2.8 | 642.50 | 1.0 | .. | 4 |
| All employees - total | \$ | Nov qr 93 | 527.00 | 521.10 | 1.1 | 4.4 | 521.50 | 0.2 | .. | 4 |
| Award rates of pay | | | | | | | | | | |
| Full-time adult employees | June 85=100 | Dec 93 | 141.7 | 141.3 | 0.3 | 0.9 | 140.5 | 0.3 | .. | 5 |
| Industrial disputes (12 months ended July 93) | | | | | | | | | | |
| Working days lost per '000 employees | no. | Nov 93 | 179 | 488 | -63.3 | -48.9 | 112 | -45.9 | .. | 6 |
| *Consumer price index (e) | | | | | | | | | | |
| All groups | 1989-90=100 | Dec qr 93 | 110.8 | 110.5 | 0.3 | 2.4 | 110.0 | 0.2 | .. | 7 |
| *Retail trade establishments | | | | | | | | | | |
| Value of turnover | | | | | | | | | | |
| - original series | \$m | Jan 93 | 1,879.4 | 2,734.3 | -31.3 | -1.1 | 8,015.4 | -29.1 | 23.4 | 8 |
| - trend estimate | \$m | Jan 93 | 1,989.1 | 1,991.6 | -0.1 | 3.3 | 8,438.5 | 0.5 | 23.6 | 8 |
| - seasonally adjusted (1989-90 prices) | \$m | Dec qr 93 | 5,372.9 | 5,397.6 | -0.5 | 2.0 | 22,503.0 | 1.9 | 23.9 | 8 |
| *Overseas trade - | | | | | | | | | | |
| Imports | \$m | Dec 93 | 1,634.6 | 1,800.6 | -9.2 | 11.5 | 5,486.2 | -6.0 | 29.8 | 9 |
| Exports (exclude re-exports) | \$m | Dec 93 | 1,062.7 | 968.3 | 9.7 | 14.6 | 5,208.8 | -1.0 | 20.4 | 10 |
| Tourism - | | | | | | | | | | |
| Caravan parks - takings | \$'000 | Sept qr 93 | 15,301 | 15,241 | 0.4 | 6.5 | 104,374 | 7.6 | 14.7 | 23 |
| Licensed hotels, motels and guest houses with facilities | | | | | | | | | | |
| - Takings | \$'000 | Sept qr 93 | 100,636 | 101,757 | -1.1 | -1.3 | 672,163 | 9.8 | 15.0 | 23 |
| - Room occupancy rate | per cent | Sept qr 93 | 43.2 | 44.9 | .. | .. | 54.5 | .. | .. | 23 |

See footnotes at end of table.

TABLE 2. ECONOMIC INDICATORS, VICTORIA AND AUSTRALIA - (continued)

| Indicator | | Reference period | Victoria | | | | Australia | | Victoria as a % of Australia | Source index (a) |
|--|----------------|------------------|---------------|------------------|------------------|---------------|------------------|------------------|------------------------------|------------------|
| | | | Figures | | % Change | | Figures | % Change | | |
| | | | Latest period | Preceding period | preceding period | previous year | Over same period | | | |
| | | | | | | | Latest period | preceding period | | |
| *New motor vehicle registrations - | | | | | | | | | | |
| New motor vehicle registrations | | | | | | | | | | |
| - original series | no. | Jan 93 | 8,174 | 11,608 | -29.6 | 8.5 | 36,880 | -24.0 | 22.2 | 11 |
| - seasonally adjusted | no. | Jan 93 | 11,480 | 10,849 | 5.8 | 10.5 | 48,784 | 6.4 | 23.5 | 11 |
| - trend estimate | no. | Jan 93 | 11,219 | 11,021 | 1.8 | 9.1 | 47,558 | 1.4 | 23.6 | 11 |
| Cars and station wagons | | | | | | | | | | |
| - original series | no. | Jan 93 | 7,148 | 10,005 | -28.6 | 10.6 | 30,979 | -24.0 | 23.1 | 11, 12 |
| - seasonally adjusted | no. | Jan 93 | 10,026 | 9,202 | 9.0 | 13.1 | 41,177 | 8.7 | 24.3 | 11, 12 |
| Other motor vehicles (excludes motor cycles) | | | | | | | | | | |
| - original series | no. | Jan 93 | 1,026 | 1,603 | -36.0 | -4.0 | 5,701 | -26.8 | 18.0 | 11, 12 |
| - seasonally adjusted | no. | Jan 93 | 1,454 | 1,647 | -11.7 | -4.5 | 7,607 | -4.7 | 19.1 | 11, 12 |
| Manufacturing - | | | | | | | | | | |
| Actual private new capital expenditure | | | | | | | | | | |
| - original series | \$m | Sept qr 93 | 618 | 780 | -20.8 | 43.7 | 1,788 | -12.7 | 34.6 | 15, 16 |
| Production - | | | | | | | | | | |
| Whole milk | million litres | Oct 93 | 645 | 521 | 23.8 | 9.3 | 960 | 20.0 | 67.2 | 17, 18 |
| Butter | tonnes | Sept 93 | 11,694 | 5,110 | 128.8 | 11.1 | 13,823 | 102.6 | 84.6 | 19 |
| Cheese (incl. cheddar and non-cheddar) | tonnes | Sept 93 | 13,710 | 6,221 | 120.4 | -1.0 | 22,233 | 77.7 | 61.7 | 19 |
| Yarns | | | | | | | | | | |
| - Cotton | tonnes | Nov 93 | 1,278 | 1,365 | -6.4 | 34.5 | 2,357 | -4.9 | 54.2 | 17, 18 |
| - Woollen | tonnes | Nov 93 | 1,332 | 1,309 | 1.8 | 9.1 | 1,684 | 3.2 | 79.1 | 17, 18 |
| Woven fabric | | | | | | | | | | |
| - Cotton | '000 sq m | Nov 93 | 1,610 | 1,817 | -11.4 | 13.9 | 4,024 | -2.5 | 40.0 | 17, 18 |
| - Woollen (includes worsted wool) | '000 sq m | Nov 93 | 423 | 390 | 8.5 | -14.7 | 652 | 8.5 | 64.9 | 17, 18 |
| - Man-made fibres | '000 sq m | Nov 93 | 5,614 | 6,333 | -11.4 | -7.5 | 16,228 | 1.5 | 34.6 | 17, 18 |
| Textile floor coverings | '000 sq m | Nov 93 | 3,505 | 3,202 | 9.5 | 13.9 | 4,353 | 14.8 | 80.5 | 17, 18 |
| Clay bricks | million | Nov 93 | 28 | 25 | 12.0 | 12.0 | 161 | 9.5 | 17.4 | 17, 18 |
| Ready mixed concrete | '000 cu m | Nov 93 | 245 | 246 | -0.4 | 6.5 | 1,297 | 0.5 | 18.9 | 20 |
| Paints and other surface coatings | | | | | | | | | | |
| - Architectural and decorative paints | '000 litres | Aug 93 | 1,409 | 1,071 | 31.6 | -3.1 | 8,235 | -6.9 | 17.1 | 21 |
| Electricity - production | million kWh | Jan 94 | 2,732 | 3,224 | -15.3 | -9.2 | 13,163 | -2.2 | 20.8 | 22 |
| Gas - available for issue through mains | million Mj | Nov 93 | 13,465 | 15,376 | -12.4 | 1.1 | 45,126 | -6.1 | 29.8 | 22 |
| *Actual private new capital expenditure - | | | | | | | | | | |
| Building and structures - original series | | | | | | | | | | |
| Equipment, plant and machinery | \$m | Sept qr 93 | 396 | 313 | 26.5 | -0.3 | 1,796 | -0.7 | 22.0 | 15 |
| - original series | \$m | Sept qr 93 | 1,218 | 1,210 | 0.7 | 37.0 | 4,599 | -2.7 | 26.5 | 15 |
| Total new capital expenditure | | | | | | | | | | |
| - original series | \$m | Sept qr 93 | 1,614 | 1,522 | 6.0 | 25.4 | 6,368 | -2.6 | 25.3 | 15 |
| - seasonally adjusted | \$m | Sept qr 93 | 1,594 | 1,468 | 8.6 | 25.5 | 6,495 | 3.5 | 24.5 | 15 |
| *Housing finance for owner occupation - | | | | | | | | | | |
| Secured loans to individuals by type of lender | | | | | | | | | | |
| All Banks | | | | | | | | | | |
| - number of dwelling units financed | no. | Dec 93 | 13,443 | 11,859 | 13.4 | 70.6 | 47,151 | 4.8 | 28.5 | 24 |
| - value of loans secured | \$m | Dec 93 | 937.9 | 852.5 | 10.0 | 38.6 | 3,851.2 | 4.9 | 24.4 | 24 |
| Total number of dwelling units financed | no. | Dec 93 | 14,110 | 12,656 | 11.5 | 63.7 | 51,624 | 3.5 | 27.3 | 24 |
| Total value of loans secured (f) | \$m | Dec 93 | 990.3 | 909.6 | 8.9 | 36.0 | 4,218.7 | 3.9 | 23.5 | 24 |
| Loan purpose (g) | | | | | | | | | | |
| - Established dwellings | \$m | Dec 93 | 762.2 | 707.0 | 7.8 | 32.3 | 3,095.1 | 4.1 | 24.6 | 24 |
| - Construction of dwellings | \$m | Dec 93 | 147.2 | 130.0 | 13.2 | 34.7 | 696.9 | 1.8 | 21.1 | 24 |
| - Newly erected dwellings | \$m | Dec 93 | 32.4 | 35.4 | -8.5 | 36.1 | 189.3 | -0.3 | 17.1 | 24 |
| Finance - | | | | | | | | | | |
| Personal finance commitments - total | \$m | Dec 93 | 472.5 | 416.2 | 13.5 | 25.8 | 2,171.3 | 11.3 | 21.8 | 30 |
| Commercial finance commitments - total | \$m | Dec 93 | 2,007.7 | 2,285.6 | -12.2 | -6.3 | 4,617.9 | -45.4 | 43.5 | 31 |
| Lease finance commitments - total | \$m | Dec 93 | 126.9 | 97.6 | 30.0 | 14.6 | 552.4 | 20.3 | 23.0 | 32 |

See footnotes at end of table.

TABLE 2. ECONOMIC INDICATORS, VICTORIA AND AUSTRALIA - (continued)

| Indicator | Reference period | Victoria | | | | | Australia | | | Victoria as a % of Australia | Source index (a) |
|---|------------------|---------------|------------------|-----------------------|------------------|---------------|---------------|------------------|-----------------------|------------------------------|------------------|
| | | Figures | | % Change | | | Figures | | % Change | | |
| | | Latest period | Preceding period | Over preceding period | Over same period | | Latest period | preceding period | Over preceding period | | |
| | | | | | Over | previous year | | | | | |
| Building Approvals - | | | | | | | | | | | |
| *New residential dwelling units | | | | | | | | | | | |
| - original series | no. | Jan 93 | 2,183 | 2,436 | -10.4 | 4.4 | 12,774 | -6.7 | 17.1 | 25, 26 | |
| - seasonally adjusted | no. | Jan 93 | 2,754 | 2,634 | 4.6 | 3.3 | 16,166 | 6.1 | 17.0 | 25, 26 | |
| - trend estimate | no. | Jan 93 | 2,677 | 2,660 | 0.6 | 4.4 | 15,532 | 1.0 | 17.2 | 25, 26 | |
| Value of non-residential buildings | | | | | | | | | | | |
| - original series | \$m | Jan 93 | 65.3 | 120.4 | -45.8 | -30.2 | 566.0 | -26.2 | 11.5 | 26.0 | |
| Value of all buildings (f) | | | | | | | | | | | |
| - original series | \$m | Jan 93 | 304.9 | 388.0 | -21.4 | 3.3 | 1804.5 | -13.3 | 16.9 | 26.0 | |
| Building commencements - | | | | | | | | | | | |
| New residential dwelling units, monthly | no. | Dec 93 | 2498.0 | 2,652 | -5.8 | 6.4 | 0.0 | n.a. | .. | 27.0 | |
| New residential dwelling units, quarterly | no. | Sept qr 93 | 7488.0 | 7,387 | 1.4 | 10.8 | 45801.0 | 7.5 | 16.3 | 28.0 | |
| Building Activity - | | | | | | | | | | | |
| Value of total building activity | | | | | | | | | | | |
| - Commenced | \$m | Sept qr 93 | 1,270.3 | 1,117.4 | 13.7 | 18.7 | 6,255.3 | 3.0 | 20.3 | 28 | |
| - Done | \$m | Sept qr 93 | 1,286.5 | 1,298.9 | -1.0 | 4.1 | 6,447.2 | 6.6 | 20.0 | 28 | |
| - Yet to be done | \$m | Sept qr 93 | 1,273.7 | 1,234.6 | 3.2 | -17.7 | 7,950.4 | -2.6 | 16.0 | 28 | |
| Engineering construction - | | | | | | | | | | | |
| Value of work by private sector | | | | | | | | | | | |
| - Commenced | \$m | Sept qr 93 | 203.2 | 313.2 | -35.1 | -21.7 | 1,488.8 | -1.1 | 13.6 | 29 | |
| - Done | \$m | Sept qr 93 | 281.1 | 305.1 | -7.9 | 60.4 | 1,672.0 | 0.6 | 16.8 | 29 | |
| - Yet to be done | \$m | Sept qr 93 | 581.6 | 678.0 | -14.2 | 4.2 | 2,512.8 | -1.6 | 23.1 | 29 | |
| Value of work by public sector | | | | | | | | | | | |
| - Commenced | \$m | Sept qr 93 | 270.1 | 329.7 | -18.1 | -3.3 | 2,104.2 | 60.1 | 12.8 | 29 | |
| - Done | \$m | Sept qr 93 | 198.6 | 339.5 | -41.5 | -18.4 | 1,170.9 | -36.8 | 17.0 | 29 | |
| - Yet to be done | \$m | Sept qr 93 | 304.3 | 238.6 | 27.5 | -0.3 | 2,296.6 | 53.6 | 13.3 | 29 | |

(a) For more information on these series, refer to the publications listed in the source index below. (b) Includes hunting and mining. (c) Comprises health, education, libraries, etc., welfare and religious institutions, and other community groups. (d) Comprises electricity, gas and water, communications, public administration and defence. (e) Available only for the middle month of the quarter. (f) Includes, alterations and additions to residential buildings. (g) Excludes, alterations and additions to residential buildings.

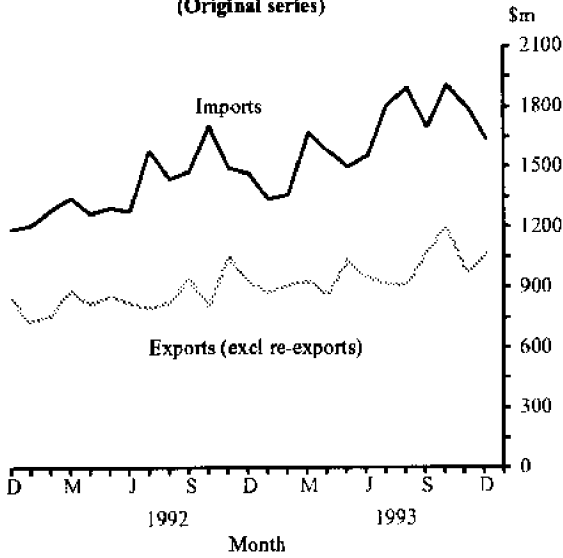
* An asterisk before a statistical series denotes that a corresponding graph is included in the relevant section.

SOURCE INDEX

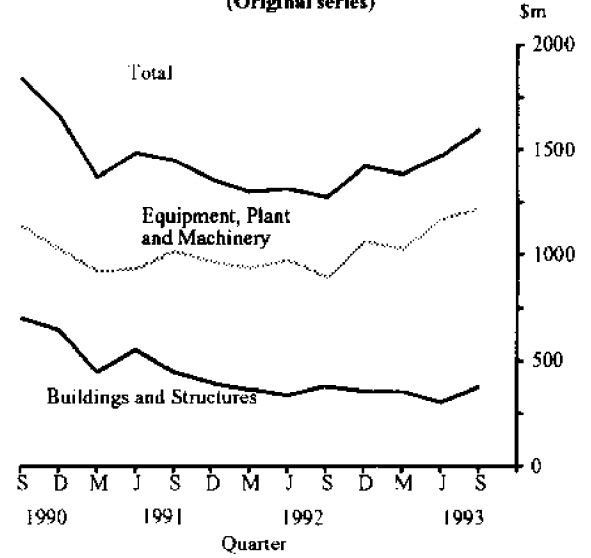
1. Australian Demographic Statistics, (3101.0) \$12.20
2. The Labour Force, Australia, Preliminary, (6202.0) \$10.70
3. Job Vacancies and Overtime, Australia, (6354.0) \$12.70
4. Average Weekly Earnings, States & Australia, (6302.0) \$12.70
5. Award Rates of Pay Indexes, Australia, (6312.0) \$12.70
6. Industrial Disputes, Australia, (6321.0) \$10.70
7. Consumer Price Index, (6401.0) \$11.70
8. Retail Trade Australia, (8501.0) \$10.70
9. Imports, Australia, Monthly Summary Tables, (5433.0) \$9.70
10. Exports, Australia, Monthly Summary Tables, (5432.0) \$9.70
11. Motor Vehicle Registrations, Australia, (9303.0) \$10.70
12. Motor Vehicle Registrations, Victoria, (9303.2) \$10.70
13. The Labour Force, Victoria, (6202.2) \$16.30
14. The Labour Force, Australia, (6203.0) \$16.30
15. State Estimates of Private New Capital Expenditure, (5646.0) \$10.70
16. Private New Capital Expenditure, Australia, (5626.0) \$10.70
17. Monthly Summary of Statistics, Victoria, (1303.2) \$10.70
18. Monthly Summary of Statistics, Australia, (1304.0) \$20.40
19. Prod. of Food, Drink and Tobacco, Australia, (8359.0) \$10.70
20. Prod. of Building Materials & Fittings, Australia, (8361.0) \$9.00
21. Prod. of Chemicals & By-products, Australia, (8362.0) \$9.00
22. Prod. of Energy Products, Australia, (8368.0) \$7.00
23. Tourist Accommodation, Australia, (8635.0) \$20.00
24. Housing Finance for Owner Occupation, Australia, (5609.0) \$10.70
25. Building Approvals, Victoria, (8731.2) \$10.70
26. Building Approvals, Australia, (8731.0) \$13.30
27. Dwelling Unit Commencements Reported by Approving Authorities, Victoria, (8741.2) \$10.70
28. Building Activity, Australia, (8752.0) \$14.30
29. Engineering Construction, Australia, (8762.0) \$10.70
30. Personal Finance, Australia, (5642.0 Tables 1E and 3E PC-Ausstats)
31. Commercial Finance, Australia, (5643.0 Tables 1E and 3E PC-Ausstats)
32. Lease Finance, Australia, (5644.0 Tables 1E and 3E PC-Ausstats)

ECONOMIC INDICATORS, VICTORIA

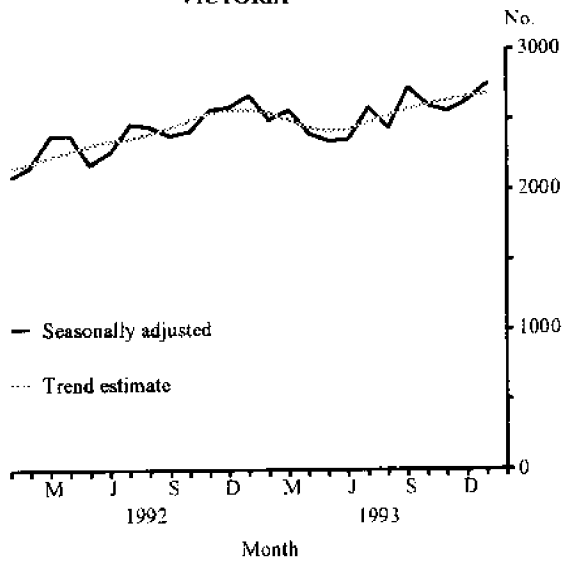
VALUE OF IMPORTS INTO, AND EXPORTS FROM, VICTORIAN PORTS
(Original series)



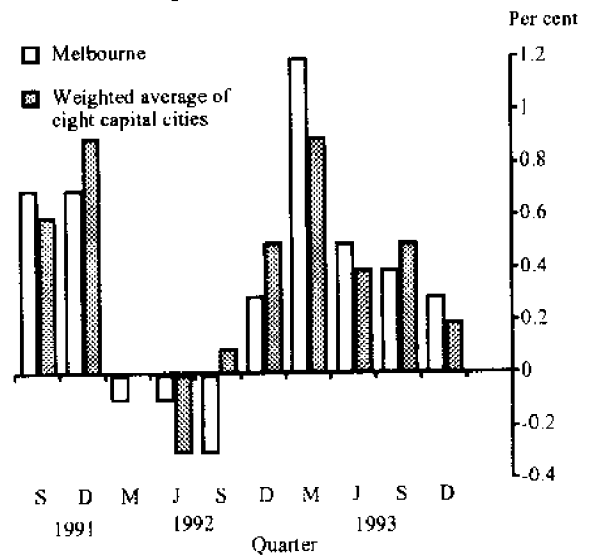
ACTUAL PRIVATE NEW CAPITAL EXPENDITURE, VICTORIA
(Original series)



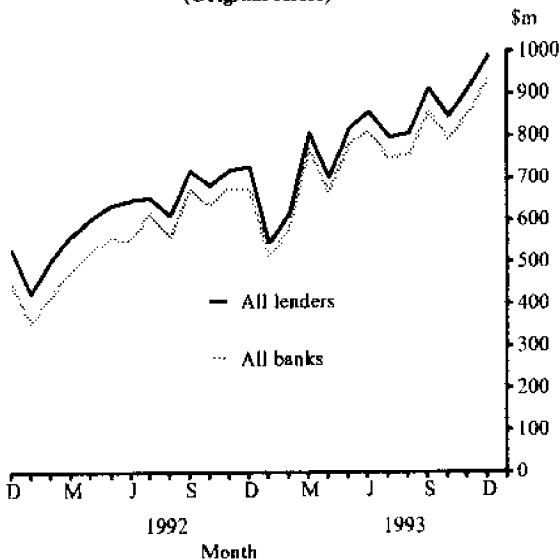
NUMBER OF NEW DWELLING UNITS APPROVED, VICTORIA



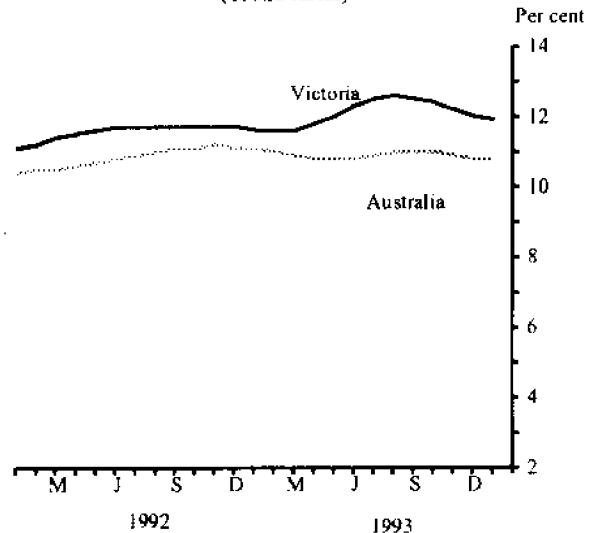
CONSUMER PRICE INDEX: ALL GROUPS
Percentage change from previous quarter



SECURED HOUSING FINANCE COMMITMENTS TO INDIVIDUALS, VICTORIA
(Original series)



UNEMPLOYMENT RATE OF THE CIVILIAN POPULATION AGED 15 YEARS AND OVER
(Trend series)



Information and Statistical Consultancy

The Australian Bureau of Statistics is Australia's national statistical authority. It collects, compiles and disseminates information on a wide range of economic, social, and demographic topics for Australia, its States and Territories.

In addition to Dissemination of Statistical information through print and electronic media, the Bureau offers *Information and Statistical Consultancy Services* as a means of handling complex questions and projects involving the collection, use, or interpretation of statistics.

ABS consultants provide expert advice and accurate information to meet a wide variety of statistical needs - personally, quickly and professionally. Our consultants can help you in -

- | | |
|---|---|
| <input type="checkbox"/> Meeting your specialised information needs | <input type="checkbox"/> Designing a sample |
| <input type="checkbox"/> In-depth data investigations | <input type="checkbox"/> Designing a survey questionnaire |
| <input type="checkbox"/> Collecting information | <input type="checkbox"/> Processing data |
| <input type="checkbox"/> Designing a survey | <input type="checkbox"/> Analysing data |
| | <input type="checkbox"/> Assessing tenders |

Call our *Information and Statistical Consultancy staff* to see about the many ways we can help you. Our inquiry staff will be happy to answer any questions you may have about the service we provide.

Melbourne (03) 615 7000

Canberra (06) 252 6627

Electronic services

DISCOVERY Key *656# for selected current economic, social, and demographic statistics.

PC-AUSSTATS Thousands of up-to-date time series are available on this ABS on-line service.
For further information phone (03) 615 7769.

PC-TELESTATS Delivers major economic indicator publications ready to be downloaded into your computer on the day of release.
For further information phone (06) 252 5408.

Recorded message services

0055 26400

Consumer Price Index
National Accounts
Balance of Payments
Labour Force Estimates
Average Weekly Earnings
Estimated Resident Population

Floppy disk service

Selected ABS services are available on floppy disk. Further information is available on (06) 252 6884.

Symbols and other usages

| | |
|--------|--|
| n.a. | not available |
| n.y.a. | not yet available |
| p | preliminary - figure or series subject to revision |
| r | figure or series revised since previous issue |
| .. | not applicable |
| - | nil or rounded to zero |
| — | break in continuity of series (where a line is drawn between two consecutive figures in the same column, or alongside two or more figures in consecutive columns). |

Where figures have been rounded, discrepancies may occur between sums of the component items and totals.

STUART JACKSON
Deputy Commonwealth Statistician



2130720002942

ISSN 0810-7521